

MoveNow Properties



WAKEFIELD OFFICE:

Address: 10 Rishworth Street, Wakefield, WF1 3BY

Web: www.movenowproperties.com

Tel: 01924 249349

Email: info@movenowproperties.com

BARNSELY OFFICE:

Address: 41A Towngate, Mapplewell, S75 6AS

Web: www.movenowproperties.com

Tel: 01226 593477

Email: mapplewell@movenowproperties.com

FOR SALE

Malvern Mews, Wakefield,

WF1 2FB

3 Bedroom, Semi-Detached

£320,000



Move Now Properties are thrilled to present this exceptional 3 bedroom semi-detached property for sale, boasting a garage with power and lighting. As you explore this inviting residence, you'll discover a perfect blend of modern comfort and thoughtful design.

- 3 bedrooms
- Modern and Spacious
- Enclosed Garden
- Off Road Parking
- Must be viewed to be appreciated
- Garage with power and Lighting

Entrance Hall:

Step into sophistication through the composite entrance door into the tiled-floored entrance hall. The ambiance is inviting, with a staircase gracefully leading to the first floor and a smart utilization of space under the stairs for convenient storage.

Living Room:

Measurements: 10' 10" x 16' 5" (3.30m x 5.00m)

A haven of comfort awaits in the spacious living room adorned with plush carpet flooring. The room is bathed in natural light from the large double-glazed window, offering a picturesque view of the front. The inclusion of a radiator ensures warmth, making this space perfect for relaxation and gatherings.



Kitchen/Dining Room:

Measurements: 17' 9" x 10' 10" (5.40m x 3.30m)

The heart of the home, the kitchen/dining room, boasts tiled flooring and well-appointed wall and base units. Integrated appliances, including a fridge freezer, dishwasher, double oven, and gas hob with a stylish cooker hood, make culinary endeavours a joy. Recessed spotlights add a touch of modern elegance, while patio doors open to the enclosed rear garden, seamlessly blending indoor and outdoor living.



Downstairs WC:

A practical addition, the downstairs WC features tiled flooring, a wall-hung wash basin with tiled splashback, a low flush WC, and a radiator. The frosted double-glazed window overlooking the side ensures privacy and natural light.

Stairs and Landing:

Ascend the carpeted stairs to the landing, where a frosted double-glazed window provides soft illumination. Useful storage cupboards are cleverly integrated, and doors lead to the bedrooms and the family bathroom.

Bedroom 1:

Measurements: 9' 10" x 12' 2" (3.0m x 3.70m)

Escape to tranquillity in this master bedroom, featuring plush carpet flooring, a large double-glazed window offering views of the front, and a radiator for added comfort.



Ensuite:

The epitome of modern luxury, the ensuite boasts tiled flooring and an enclosed shower unit with tasteful wall tiling. Stylish black accessories, a low flush WC, a wall-mounted wash basin with a mixer tap, and a black towel heater enhance the contemporary feel.



Bedroom 2:

Measurements: 9' 10" x 10' 2" (3.00m x 3.10m)

Comfort reigns in bedroom 2, adorned with carpet flooring, a radiator, and a double-glazed window overlooking the rear.



Bedroom 3

Measurements 3: 7' 7" x 10' 6" (2.30m x 3.20m)

Practicality meets style in bedroom three, featuring carpet flooring, a radiator, a double-glazed window with rear views, and a fitted wardrobe for added convenience.



Family Bathroom:

Immerse yourself in the modern ambiance of the family bathroom, showcasing tiled flooring, partially tiled walls, and a suite comprising a bath with overhead mains shower and glass shower screen, a low flush WC, a wash basin, and a feature frosted window.



Outside:

The property's exterior impresses with a front drive offering off-road parking, leading to a garage with power, lighting, and an up-and-over door.

The rear delights with an enclosed garden featuring fence boundaries, an Indian stone patio, and low-maintenance artificial grass—a private haven for outdoor enjoyment.

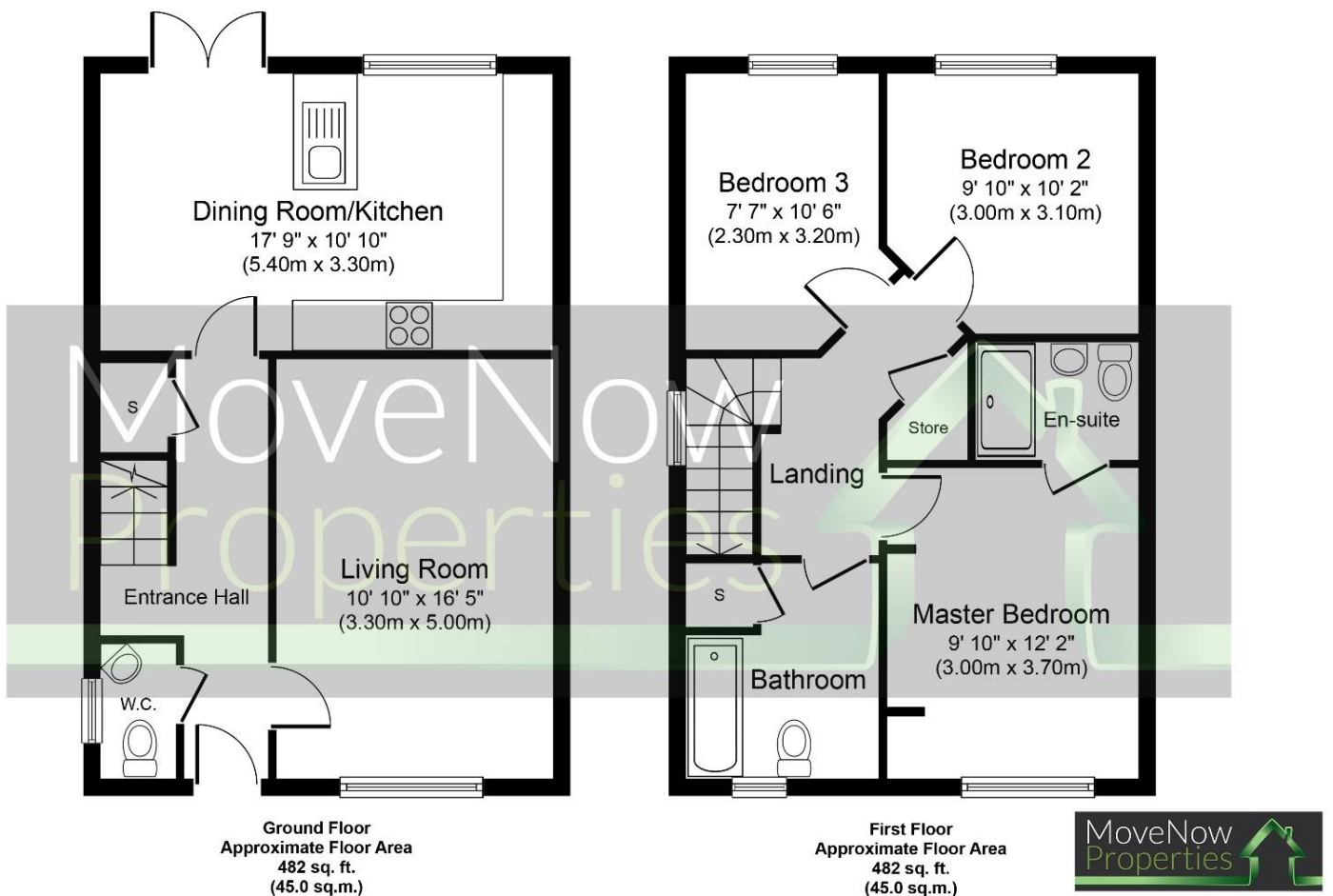


Tenure

Freehold

Floor plans

These floor plans are intended as a rough guide only and are not to be intended as an exact representation and should not be scaled. We cannot confirm the accuracy of the measurements or details of these floor plans.



Whilst every attempt has been made to ensure the accuracy of the floor plan contained here, measurements of doors, windows, rooms and any other items are approximate and no responsibility is taken for any error, omission, or mis-statement. The measurements should not be relied upon for valuation, transaction and/or funding purposes. This plan is for illustrative purposes only and should be used as such by any prospective purchaser or tenant. The services, systems and appliances shown have not been tested and no guarantee as to their operability or efficiency can be given.
Copyright V360 Ltd 2024 | www.houseviz.com

Viewings

For further information or to arrange a viewing please contact our offices directly.

Free valuations

Considering selling or letting your property?

For a free valuation on your property please do not hesitate to contact us.

DISCLAIMER:

The details shown on this website are a general outline for the guidance of intending purchasers, and do not constitute, nor constitute part of, an offer or contract or sales particulars. All descriptions, dimensions, references to condition and other details are given in good faith and are believed to be correct but any intending purchasers should not rely on them as statements or representations of fact but must satisfy themselves by inspection, searches, survey, enquiries or otherwise as to their correctness. We have not been able to test any of the building service installations and recommend that prospective purchasers arrange for a qualified person to check them before entering into any commitment. Further, any reference to, or use of any part of the properties is not a statement that any necessary planning, building regulations or other consent has been obtained. All photographs shown are indicative and cannot be guaranteed to represent the complete interior scheme or items included in the sale. No person in our employment has any authority to make or give any representation or warranty whatsoever in relation to this property.