

MoveNow Properties



Three bedroom home which offers a perfect balance between spaciousness and cosiness with 3 beautifully appointed bedrooms, ensuring you and your family have ample space to relax and recharge.

Situated in a highly sought-after neighbourhood.



MoveNow



Scan QR code to follow account

TikTok

- Three Bedrooms
- Semi Detached
- Fantastic Location
- Available with No Chain
- Rear Conservatory
- Enclosed Rear Garden
- Drive Offering Parking
- Garage with Power and Lighting

More Information:

www.movenowproperties.com

info@movenowproperties.com



10 Rishworth Street, Wakefield,
WF1 3BY



**Manor Crescent,
Wakefield, WF2 6PG
3 Bedroom Semi
Detached
OIRO £210,000**



To book a viewing
please contact us on

01924 249349

Entrance Hall

Upon entering, you'll be welcomed with wood-effect flooring, a frosted double glazed window providing natural light, and easy access to the living spaces and stairs leading to the first-floor landing.

Living room/Diner

Measurements "22' 6" x "14' 1" (6.88m x 4.28m)

Your spacious living room is the heart of this home. With carpet flooring, a large double glazed bay window offering views of the front, and patio doors opening to the conservatory, it's the perfect space for relaxation and entertaining.



Kitchen

Measurements "22' 6" x "14' 1" (6.88m x 4.28m)

The offers a range of wall and base units, plumbing for washing machine and dishwasher, an integrated oven and 4 ring gas hob with a cooker hood, a 1.5 sink and drainer with a mixer tap, and recessed spotlights. The double glazed window overlooks the side, and an external door leads to the rear garden.

Conservatory

Measurements"14' 8" x "7' 2" (4.47m x 2.18m)

This charming conservatory is a space bathed in natural light from double glazed windows. Tiled effect vinyl flooring, electric heaters, and patio doors provide a seamless connection to the enclosed rear garden, creating the ideal space for indoor-outdoor living.



Stairs and landing

Ascend the carpeted stairs, guided by a handrail, with a double glazed window offering a pleasant view of the side. The landing leads to your private spaces, ensuring a tranquil night's sleep.

Bedroom 1

Measurements "12' 10" x "10' 1" (3.90m x 3.07m)

Your master bedroom is a spacious retreat with carpeted flooring and a double glazed window overlooking the front, allowing you to start your day with refreshing natural light.

Bedroom 2

Measurements "10' 0" x "9' 5" (3.06m x 2.87m)

The second bedroom offers generous space with carpet flooring and a double glazed window overlooking the rear, creating a serene ambiance.



Bathroom

Measurements "6' 7" x "5' 4" (2.01m x 1.63m)

The bathroom offers a 3 piece suite with a low flush WC, pedestal washbasin, and a bath with a shower attachment. Tiled flooring and a frosted double glazed window complete this functional space.

Outside

The front of the property boasts a low-maintenance garden and a convenient drive running alongside the property, leading to the detached garage. To the rear, you'll find a private, enclosed garden with a lawn and secure fence boundaries. A peaceful haven where you can enjoy nature and outdoor activities in complete privacy.

Drive Offering Parking

Forget about parking hassles. This property comes with a convenient drive, ensuring you always have a space for your vehicles.

Garage

The detached garage is a versatile space with the added convenience of power and lighting, making it perfect for storage, hobbies, or even a home workshop.



Tenure

Freehold

Viewings

For further information or to arrange a viewing please contact our office on 01924 249349.

Free valuations

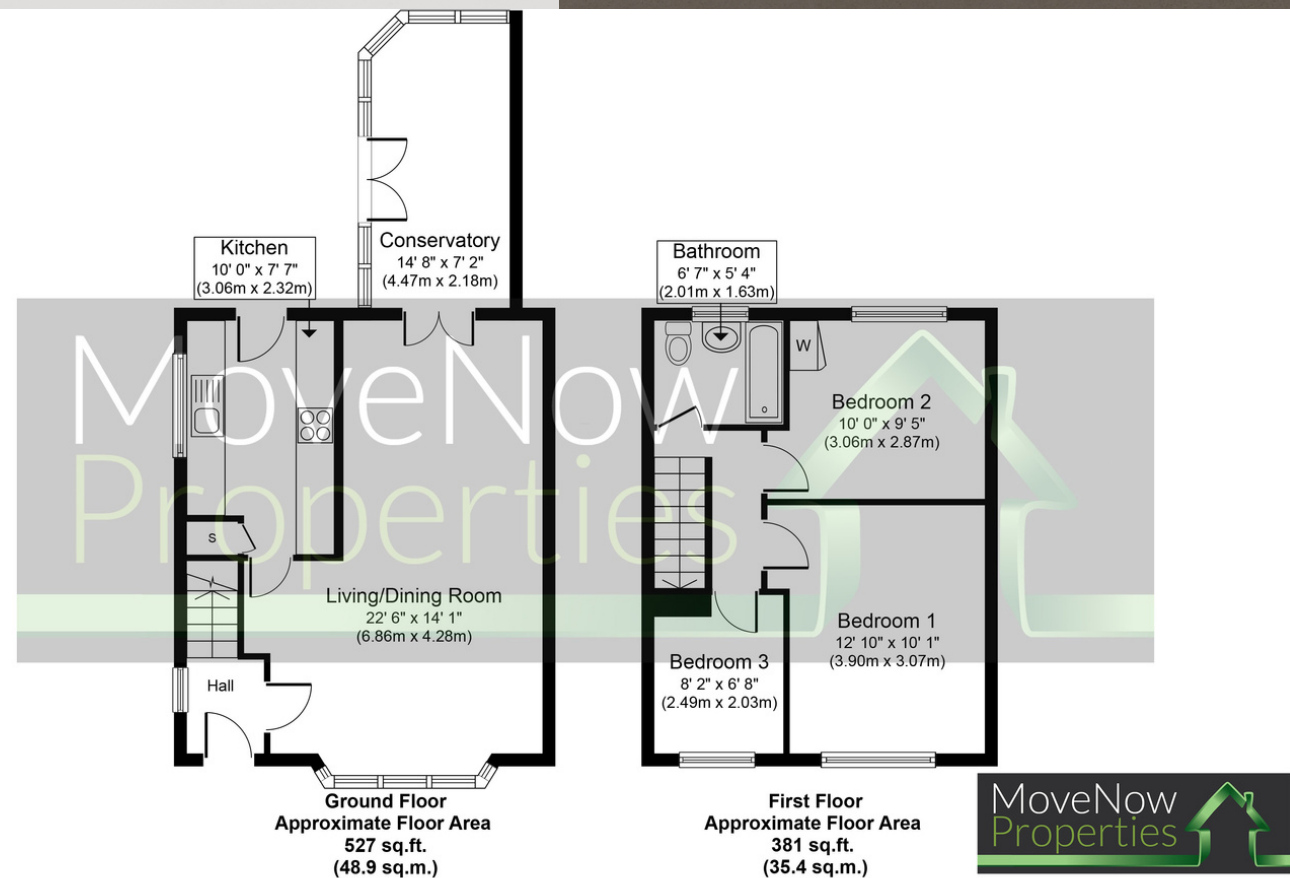
Considering selling or letting your property? For a free valuation on your property please do not hesitate to contact us: 01924 249349
info@movenowproperties.com
www.movenowproperties.com

EPC

Certificate Number :

Score	Energy rating	Current	Potential
92+	A		
81-91	B		83
69-80	C		
55-68	D		
39-54	E	39	
21-38	F		
1-20	G		

<https://find-energy-certificate.digital.communities.gov.uk/energy-certificate/>



Whilst every attempt has been made to ensure the accuracy of the floor plan contained here, measurements of doors, windows, rooms and any other items are approximate and no responsibility is taken for any error, omission, or mis-statement. The measurements should not be relied upon for valuation, transaction and/or funding purposes. This plan is for illustrative purposes only and should be used as such by any prospective purchaser or tenant. The services, systems and appliances shown have not been tested and no guarantee as to their operability or efficiency can be given.

Copyright V360 Ltd 2023 | www.houseviz.com

Floor plans

These floor plans are intended as a rough guide only and are not to be intended as an exact representation and should not be scaled. We cannot confirm the accuracy of the measurements or details of these floor plans.

DISCLAIMER:

The details shown on this website are a general outline for the guidance of intending purchasers, and do not constitute, nor constitute part of, an offer or contract or sales particulars. All descriptions, dimensions, references to condition and other details are given in good faith and are believed to be correct but any intending purchasers should not rely on them as statements or representations of fact but must satisfy themselves by inspection, searches, survey, enquiries or otherwise as to their correctness. We have not been able to test any of the building service installations and recommend that prospective purchasers arrange for a qualified person to check them before entering into any commitment. Further, any reference to, or use of any part of the properties is not a statement that any necessary planning, building regulations or other consent has been obtained. All photographs shown are indicative and cannot be guaranteed to represent the complete interior scheme or items included in the sale. No person in our employment has any authority to make or give any representation or warranty whatsoever in relation to this property.