



**FOR SALE**

**Cornmill Drive, Liversedge**

**WF15 7EF**

**4 Bedroom, Terrace**

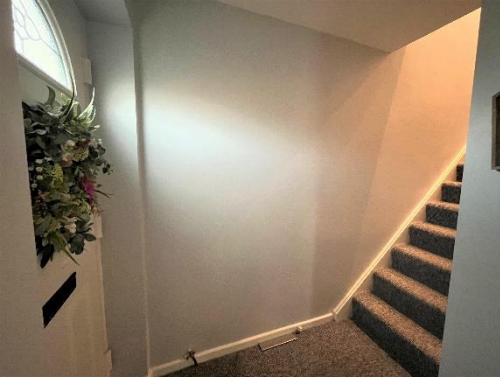
**£165,000**



Movenowproperties are pleased to offer this 4 double bedroom property for sale. A spacious home with large dining room, master bedroom with dressing area, modern bathroom, off road parking and enclosed rear garden.

## Entrance

Having carpet flooring, stairs leading to first floor and door to living room.



## Living Room

**Measurements: 12' 6" x 12' 3" (3.81m x 3.74m)**

A spacious living area with carpet flooring, gas fire with attractive surround, large double glazed window overlooking the front and radiator.



## Dining Room

**Measurements: 20' 10" x 7' 9" (6.35m x 2.36m)**

Having double glazed window overlooking the side and rear, radiator and carpet flooring.



## Kitchen

**Measurements: 10' 11" x 7' 5" (3.32m x 2.26m)**

Offering a range of modern wall and base units, work surfaces, understairs storage, tiling to walls and floors, freestanding electric oven and hob, stainless steel sink with drainer and mixer tap, radiator and UPVC door and double glazed window overlooking the rear.





## Stairs & Landing

Carpet flooring, glass balustrade and doors to bedrooms and bathroom.



## Bedroom 1

**Measurements: 20' 8" x 9' 1" (6.31m x 2.78m)**

A double bedroom with carpet flooring, recessed spotlights and large dressing area with double glazed window overlooking the rear.



## Bedroom 2

**Measurements: 11' 9" x 9' 1" (3.59m x 2.78m)**

A double bedroom with carpet flooring, radiator and double glazed window overlooking the front.



### Bedroom 3

Measurements: 9' 9" x 8' 8" (2.98m x 2.65m)

A double bedroom with carpet flooring, useful storage cupboard and double glazed window overlooking the front.



### Bedroom 4

Measurements: 10' 2" x 8' 9" (3.11m x 2.67m)

A double bedroom with carpet flooring and double glazed window overlooking the rear.



### Bathroom

Measurements: 7' 4" x 5' 4" (3.11m x 1.62m)

A modern bathroom with low flush wc and wash basin set in modern vanity, bath with overhead shower and glass shower screen, tiling to floor and walls, frosted double glazed window overlooking the rear, recessed spot lights and chrome towel heater.



### Outside

To the front of the property is off road parking.

Side access to the rear of the property.

Private enclosed rear yard with raised paved area



**Tenure**  
Freehold

**Viewings**

For further information or to arrange a viewing please contact our office on 01924 249349.

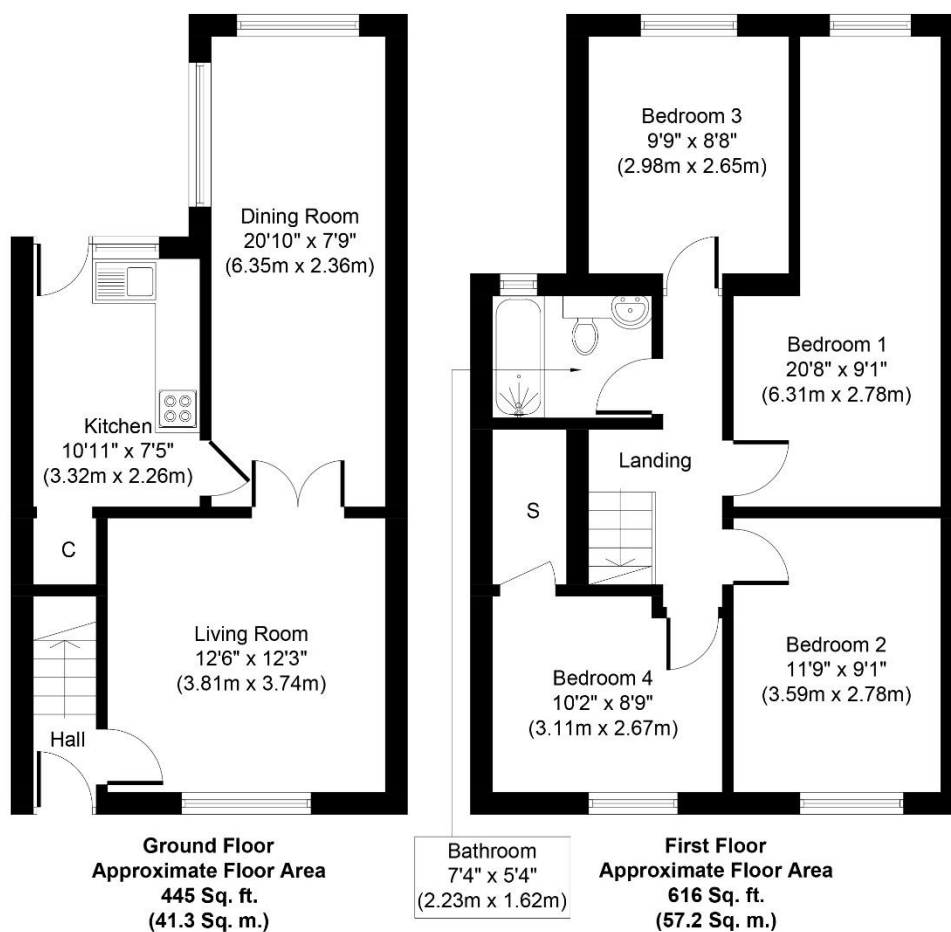
**Free valuations**

Considering selling or letting your property?

For a free valuation on your property please do not hesitate to contact us [Movenowproperties.com](http://Movenowproperties.com) 01924 249349 / [info@movenowproperties.com](mailto:info@movenowproperties.com)

**Floor plans**

These floor plans are intended as a rough guide only and are not to be intended as an exact representation and should not be scaled. We cannot confirm the accuracy of the measurements or details of these floor plans.



Whilst every attempt has been made to ensure the accuracy of the floor plan contained here, measurements of doors, windows, rooms and any other items are approximate and no responsibility is taken for any error, omission, or mis-statement. The measurements should not be relied upon for valuation, transaction and/or funding purposes. This plan is for illustrative purposes only and should be used as such by any prospective purchaser or tenant. The services, systems and appliances shown have not been tested and no guarantee as to their operability or efficiency can be given.  
Copyright V360 Ltd 2023 | [www.houseviz.com](http://www.houseviz.com)

**DISCLAIMER:**

The details shown on this website are a general outline for the guidance of intending purchasers, and do not constitute, nor constitute part of, an offer or contract or sales particulars. All descriptions, dimensions, references to condition and other details are given in good faith and are believed to be correct but any intending purchasers should not rely on them as statements or representations of fact but must satisfy themselves by inspection, searches, survey, enquiries or otherwise as to their correctness. We have not been able to test any of the building service installations and recommend that prospective purchasers arrange for a qualified person to check them before entering into any commitment. Further, any reference to, or use of any part of the properties is not a statement that any necessary planning, building regulations or other consent has been obtained. All photographs shown are indicative and cannot be guaranteed to represent the complete interior scheme or items included in the sale. No person in our employment has any authority to make or give any representation or warranty whatsoever in relation to this property.