



FOR SALE

18 South Street, Normanton,

WF6 1DY

6 Bedroom, Semi Detached

OIEO £300,000

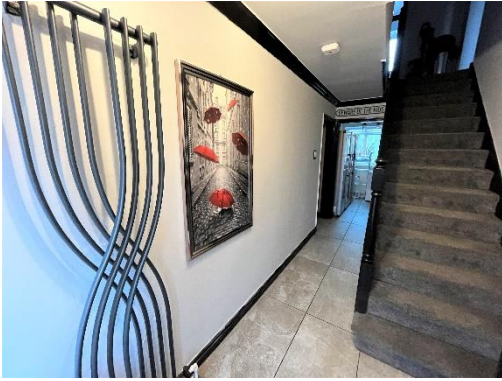


Movenowproperties are pleased to offer this 6 Bedroom Semi Detached property for sale.

Having a converted garage offering a 6th bedroom and en suite to the ground floor. Also benefiting from spacious living room to dining room, conservatory, entrance hall, kitchen / dining room, 4 further good sized bedrooms, modern family bathroom and separate shower room. Situated on a corner plot with large garden to side and rear. Available with no chain.

Entrance hall

A spacious entrance hall with UPVC entrance door and frosted side glass, radiator and stairs leading to first floor.



Living room / Dining Room

Measurements: 24' 3" x 10' 5" (7.40m x 3.17m)

A Spacious through living room with double glazed bay window overlooking the front, newly fitted log burner set in chimney breast with attractive wooden mantel.

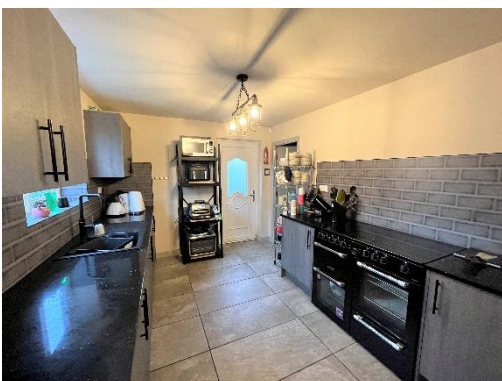
The dining area has patio doors opening to rear conservatory.



Kitchen

Measurements: 20' 6" x 9' 2" (6.25m x 2.79m)

A newly fitted kitchen with wall and base units, complementary, granite work surfaces and tiled splash back, sink and drainer with mixer tap, range cooker with electric hob. Tiled flooring, useful storage cupboard, 2 double glazed window overlooking the rear and conservatory and UPVC external door leading to enclosed garden.





Conservatory

Measurements 14' 5" x 8' 6" (4.40m x 2.60m)

Having door opening to enclosed rear garden, double glazed windows overlooking front and side.



Bedroom 6

Measurements: 14' 6" x 12' 8" (4.42m x 3.85m)

A double bedroom with laminate flooring, radiator and double glazed window overlooking the side.



En-Suite

Measurements: 8' 4" x 4' 11" (2.54m x 1.50m)

A modern shower room with walk in double shower, low flush wc, pedestal wash basin, part tiling to walls, towel heater and frosted double glazed window.



Stairs & Landing

Having carpet flooring, spindle stair case and loft hatch.

Bedroom 1

Measurements: 12' 0" x 11' 11" (3.66m x 3.62m)

A double bedroom with laminate flooring, radiator and double glazed window overlooking the front.



Bedroom 2

Measurements: 11' 11" x 8' 11" (3.63m x 2.73m)

Another double bedroom with laminate flooring, radiator and double glazed window overlooking the rear.



Bedroom 3

Measurements: 12' 0" x 10' 0" (3.65m x 3.04m)

Another double bedroom with laminate flooring, radiator and double glazed window overlooking the rear.



Bedroom 4

Measurements: 14' 5" x 11' 3" (4.39m x 3.42m)

Another double bedroom with laminate flooring, radiator and double glazed bay window overlooking the front.



Bedroom 5

Measurements: 12' 0" x 11' 11" (3.66m x 3.62m)

A large single bedroom with laminate flooring, radiator and double glazed window overlooking the front.



Shower Room

Measurements: 6' 5" x 2' 8" (1.95m x 0.82m)

A modern shower room with tiling to wall and shower.



Bathroom

Measurements: 8' 0" x 5' 6" (2.44m x 1.68m)

A modern 3 piece suite in white with heated towel rail, freestanding bath, low flush wc, pedestal wash basin, black accessories and frosted double glazed window overlooking the rear.



Loft

A good size loft which is fully boarded with electricity and pull down ladder. Ideal for storage or office space. This property also benefits from 15 solar panels and 2 batteries which are owned outright with sell back to utility provider.

Outside

To the front of the property is drive way offering off road parking and attractive front garden. To the rear and side is a large enclosed rear garden with fenced boundaries and pleasant seating area.



Tenure

Freehold

Viewings

For further information or to arrange a viewing please contact our office on 01924 249349.

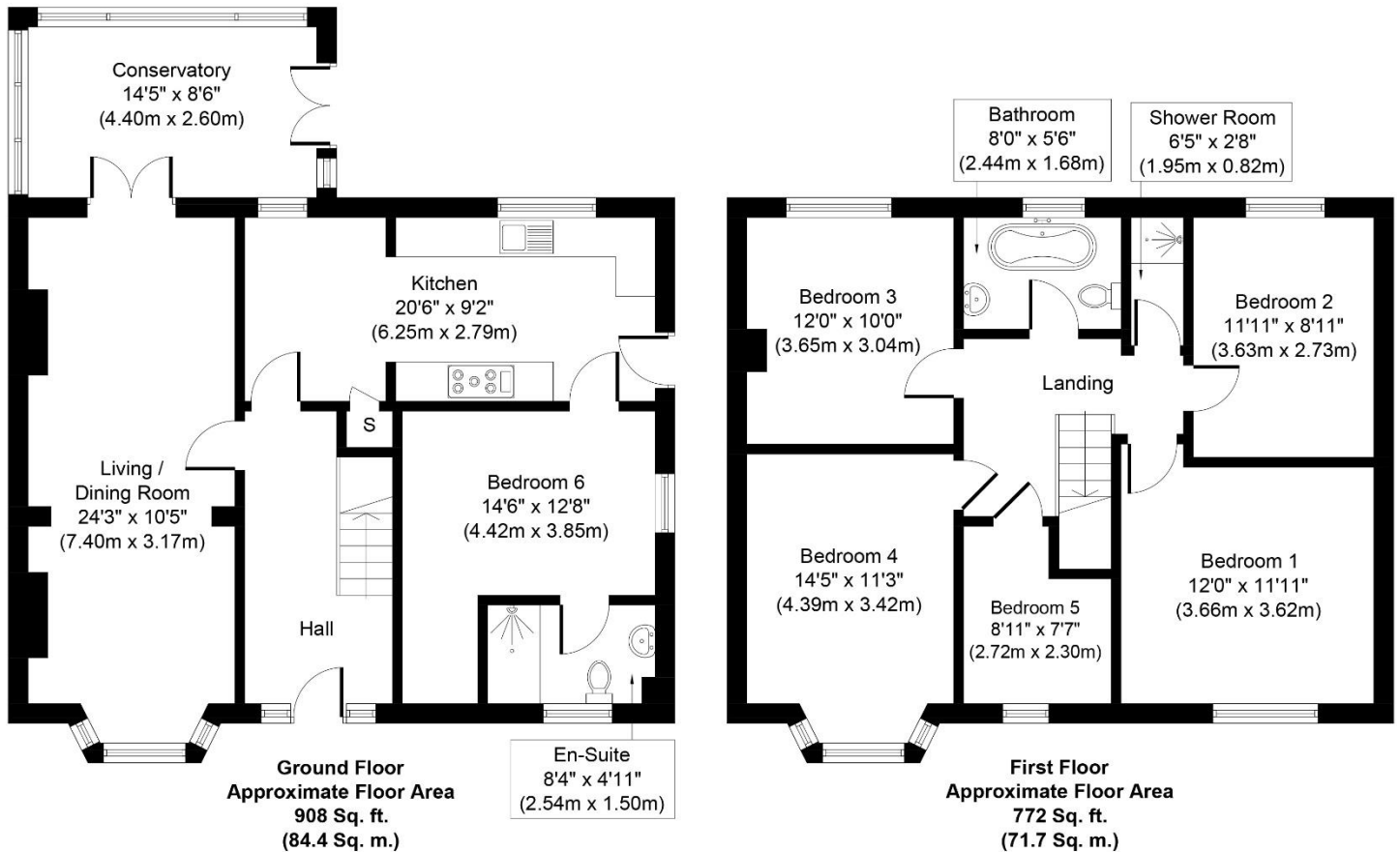
Free valuations

Considering selling or letting your property?

For a free valuation on your property please do not hesitate to contact us Movenowproperties.com 01924 249349 / info@movenowproperties.com

Floor plans

These floor plans are intended as a rough guide only and are not to be intended as an exact representation and should not be scaled. We cannot confirm the accuracy of the measurements or details of these floor plans.



Whilst every attempt has been made to ensure the accuracy of the floor plan contained here, measurements of doors, windows, rooms and any other items are approximate and no responsibility is taken for any error, omission, or mis-statement. The measurements should not be relied upon for valuation, transaction and/or funding purposes. This plan is for illustrative purposes only and should be used as such by any prospective purchaser or tenant. The services, systems and appliances shown have not been tested and no guarantee as to their operability or efficiency can be given.

Copyright V360 Ltd 2022 | www.houseviz.com

DISCLAIMER:

The details shown on this website are a general outline for the guidance of intending purchasers, and do not constitute, nor constitute part of, an offer or contract or sales particulars. All descriptions, dimensions, references to condition and other details are given in good faith and are believed to be correct but any intending purchasers should not rely on them as statements or representations of fact but must satisfy themselves by inspection, searches, survey, enquiries or otherwise as to their correctness. We have not been able to test any of the building service installations and recommend that prospective purchasers arrange for a qualified person to check them before entering into any commitment. Further, any reference to, or use of any part of the properties is not a statement that any necessary planning, building regulations or other consent has been obtained. All photographs shown are indicative and cannot be guaranteed to represent the complete interior scheme or items included in the sale. No person in our employment has any authority to make or give any representation or warranty whatsoever in relation to this property.