



**FOR SALE**

**Moxon Court, Outwood,**

**WF1 3HD**

**3 Bedroom, Semi Detached**

**£190,000**



Movenowproperties are pleased to offer this 3 bedroom, semi detached property for sale. Located in the popular location of Outwood, close to all local amenities. Having large drive offering parking for several vehicles and low maintenance enclosed rear garden.

### Entrance Hall

Having laminate flooring, radiator, stairs leading to first floor and door to living room.

### Living Room

**Measurements: 14' 7" x 12' 10" (4.45m x 3.91m)**

A spacious living area with laminate flooring, large double glazed window overlooking the front, radiator, gas fire with stone surround and glazed double doors opening to kitchen / dining room.



### Kitchen / Dining Room

**Measurements: 17' 8" x 9' 0" (5.39m x 2.75m)**

Offering a range of wall and base units, integrated fridge freezer, 1.5 sink and drainer with mixer tap, electric oven and integrated microwave, electric hob, recessed spot lights, tiled flooring, radiator and UPVC patio doors opening to rear garden.



### Stairs & Landing

Having carpet flooring, hand rail and double glazed window overlooking the side.

### **Bedroom 1**

**Measurements: 11' 11" x 11' 0" (3.62m x 3.36m)**

A double bedroom with laminate flooring, radiator and double glazed window overlooking the rear.



### **Bedroom 2**

**Measurements: 11' 11" x 11' 8" (3.62m x 3.55m)**

A double bedroom with carpet flooring, radiator and double glazed window overlooking the front.

### **Bedroom 3**

**Measurements: 7' 1" x 5' 11" (2.17m x 1.81m)**

Having laminate flooring, radiator and double glazed window overlooking the front.



### **Bathroom**

**Measurements: 5' 10" x 5' 10" (1.77m x 1.77m)**

Comprising of a 3 piece suite, low flush wc, wash basin in vanity, bath with overhead shower, radiator and frosted double glazed window overlooking the rear.



## Outside

To the front of the property is a large drive offering off road parking. Gated access to the side offer further parking leading the garage and rear garden.

To the rear of the property is a garage which is in need of some refurbishment. Also benefiting from a low maintenance block paved rear garden with fenced boundaries.



## Tenure

Freehold

## Viewings

For further information or to arrange a viewing please contact our office on 01924 249349.

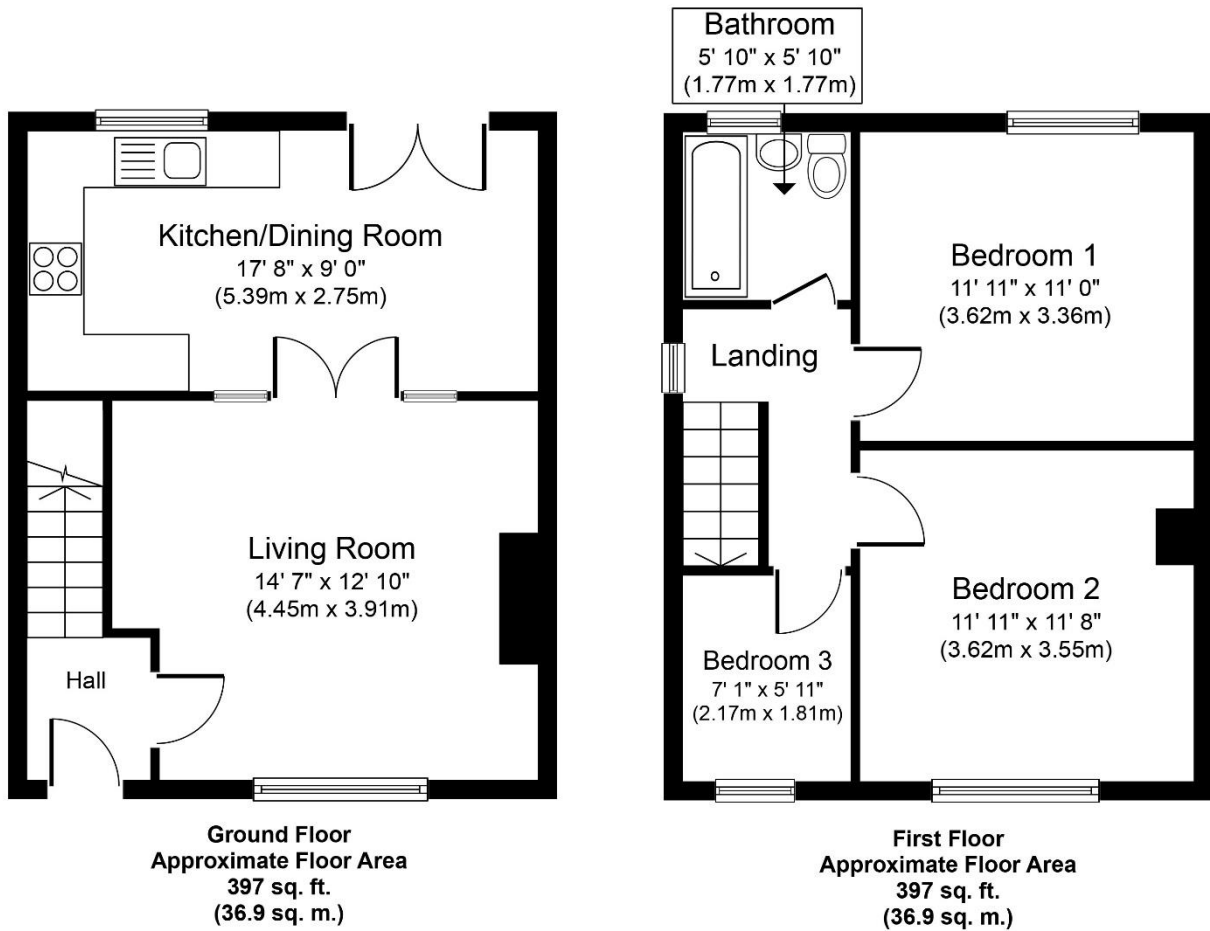
## Free valuations

Considering selling or letting your property?

For a free valuation on your property please do not hesitate to contact us [Movenowproperties.com](http://Movenowproperties.com) 01924 249349 / [info@movenowproperties.com](mailto:info@movenowproperties.com)

## Floor plans

These floor plans are intended as a rough guide only and are not to be intended as an exact representation and should not be scaled. We cannot confirm the accuracy of the measurements or details of these floor plans.



Whilst every attempt has been made to ensure the accuracy of the floor plan contained here, measurements of doors, windows, rooms and any other items are approximate and no responsibility is taken for any error, omission, or mis-statement. The measurements should not be relied upon for valuation, transaction and/or funding purposes. This plan is for illustrative purposes only and should be used as such by any prospective purchaser or tenant. The services, systems and appliances shown have not been tested and no guarantee as to their operability or efficiency can be given.  
Copyright V360 Ltd 2022 | [www.houseviz.com](http://www.houseviz.com)

## DISCLAIMER:

The details shown on this website are a general outline for the guidance of intending purchasers, and do not constitute, nor constitute part of, an offer or contract or sales particulars. All descriptions, dimensions, references to condition and other details are given in good faith and are believed to be correct but any intending purchasers should not rely on them as statements or representations of fact but must satisfy themselves by inspection, searches, survey, enquiries or otherwise as to their correctness. We have not been able to test any of the building service installations and recommend that prospective purchasers arrange for a qualified person to check them before entering into any commitment. Further, any reference to, or use of any part of the properties is not a statement that any necessary planning, building regulations or other consent has been obtained. All photographs shown are indicative and cannot be guaranteed to represent the complete interior scheme or items included in the sale. No person in our employment has any authority to make or give any representation or warranty whatsoever in relation to this property.