



FOR SALE

George A Green Road, Wakefield,

WF2 8ES

3 Bedroom, Semi Detached

£150,000



Movenowproperties are pleased to offer this spacious well maintained 3 Bedroom Semi Detached property for sale. Available with no chain offering off road parking to the front, garage and spacious enclosed rear garden.

Entrance Hall

Having UPVC entrance door, laminate flooring, radiator and stairs leading to first floor.



Living Room

Measurements: 14' 8" x 12' 0" (4.46m x 3.65m)

A spacious living area with laminate flooring, large double glazed window overlooking the front, radiator and feature fireplace with gas point.



Kitchen

Measurements: 14' 8" x 8' 8" (4.46m x 2.63m)

Offering a range of wall and base units, work surfaces and tiled splash back, 1.5 sink and drainer with mixer tap 4 ring gas hob and cooker hood above, integrated double oven, recessed spot lights, plumbing for washing machine, laminate flooring and useful storage cupboard housing boiler with frosted double glazed window overlooking the side and additional storage space for full height fridge freezer.



Downstairs WC

Measurements: 4' 11" x 2' 8" (1.49m x 0.81m)

Having low flush wc, wall hung hand wash and frosted double glazed window overlooking the rear.

Conservatory

Measurements: 14' 9" x 11' 11" (4.50m x 3.62m)

This generous conservatory has double glazed windows overlooking the rear and sides with side access and patio doors opening to the rear. Laminate flooring, radiator and lighting. Also benefiting from useful storage cupboard with plumbing for washing machine.



Stairs & Landing

Carpet flooring, hand rail, frosted double glazed window overlooking the side and loft hatch.

Bedroom 1

Measurements: 10' 4" x 9' 11" (3.14m x 3.02m)

A double bedroom with carpet flooring, radiator and double glazed window overlooking the front.



Bedroom 2

Measurements: 10' 6" x 9' 3" (3.20m x 2.83m)

A double bedroom with carpet flooring, radiator, useful storage cupboard and double glazed window overlooking the rear.



Bedroom 3

Measurements: 8' 4" x 7' 1" (2.55m x 2.17m)

Currently used as a dressing room with carpet flooring, radiator and double glazed window overlooking the front.



Bathroom

Measurements: 10' 4" x 9' 11" (3.14m x 3.02m)

A pleasant shower room offering a 3 piece suite with low flush wc, wash basin set in vanity, shower cubicle, radiator, useful storage cupboard and frosted double glazed window overlooking the front.



Outside

To the front and side is off road parking.

To the rear of the property is a large garden with patio from conservatory, spacious lawned area and fenced boundaries.



Tenure
Freehold

Viewings

For further information or to arrange a viewing please contact our office on 01924 249349.

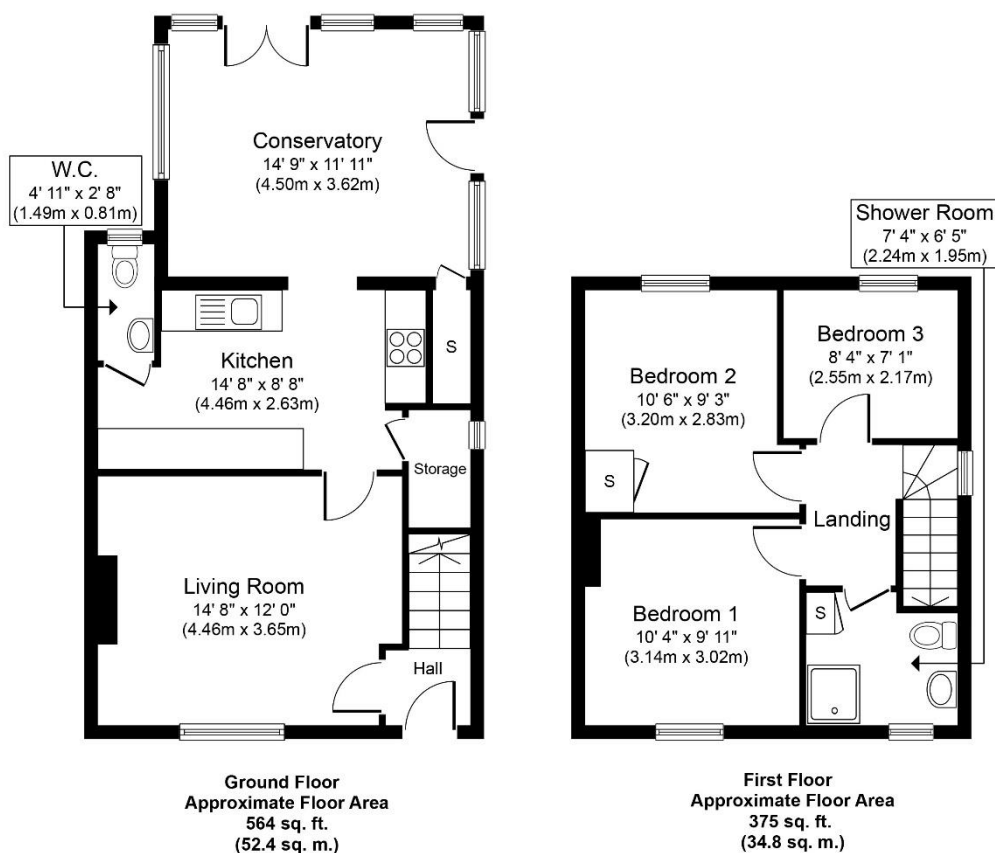
Free valuations

Considering selling or letting your property?

For a free valuation on your property please do not hesitate to contact us Movenowproperties.com 01924 249349 / info@movenowproperties.com

Floor plans

These floor plans are intended as a rough guide only and are not to be intended as an exact representation and should not be scaled. We cannot confirm the accuracy of the measurements or details of these floor plans.



Whilst every attempt has been made to ensure the accuracy of the floor plan contained here, measurements of doors, windows, rooms and any other items are approximate and no responsibility is taken for any error, omission, or mis-statement. The measurements should not be relied upon for valuation, transaction and/or funding purposes. This plan is for illustrative purposes only and should be used as such by any prospective purchaser or tenant. The services, systems and appliances shown have not been tested and no guarantee as to their operability or efficiency can be given.

Copyright V360 Ltd 2022 | www.houseviz.com

DISCLAIMER:

The details shown on this website are a general outline for the guidance of intending purchasers, and do not constitute, nor constitute part of, an offer or contract or sales particulars. All descriptions, dimensions, references to condition and other details are given in good faith and are believed to be correct but any intending purchasers should not rely on them as statements or representations of fact but must satisfy themselves by inspection, searches, survey, enquiries or otherwise as to their correctness. We have not been able to test any of the building service installations and recommend that prospective purchasers arrange for a qualified person to check them before entering into any commitment. Further, any reference to, or use of any part of the properties is not a statement that any necessary planning, building regulations or other consent has been obtained. All photographs shown are indicative and cannot be guaranteed to represent the complete interior scheme or items included in the sale. No person in our employment has any authority to make or give any representation or warranty whatsoever in relation to this property.