



FOR SALE

Holly Court, Outwood,

WF1 3TW

2 Bedroom, Bungalow

£145,000 OIRO



Movenowproperties are pleased to offer this 2 bedroom cottage available for sale. Located in an age restricted community available for over 55's only this beautiful bungalow has a spacious living room, kitchen, shower room and conservatory offering additional reception room.

Entrance Porch

Having UPVC entrance door, tiled flooring, useful storage cupboard and internal door leading to living room.



Living Room

Measurements: 19' 3" x 10' 0" (5.87m x 3.04m)

A spacious living area with carpet flooring, feature fire place, coving to ceiling and ceiling rose, 2 x electric heaters and double glazed window overlooking the front.



Kitchen

Measurements: 9' 8" x 9' 2" (2.95m x 2.79m)

Having a range of wall and base units, laminate flooring, plumbing for washing machine, space for tall fridge / freezer, freestanding over with 4 ring gas hob, sink drainer and mixer tap and double glazed window overlooking the rear.



Conservatory

Measurements: 12' 3" x 7' 4" (3.73m x 2.23m)

A lovely second reception room with double glazed windows overlooking the side and patio doors opening to rear, wall lights and laminate flooring.



Bedroom 1

Measurements: 11' 3" x 9' 11" (3.43m x 3.01m)

A double bedroom with carpet flooring, fitted wardrobes, storage cupboard housing water cylinder electric heater and window overlooking the conservatory offering borrowed light.



Bedroom 2

Measurements: 10' 2" x 9' 3" (3.10m x 2.81m)

Another good sized bedroom with carpet flooring, fitted wardrobes, electric heater and double glazed window overlooking the front.



Bathroom

Measurements: 7' 3" x 6' 1" (2.21m x 1.85m)

Comprising of a 3 piece suite, double walk in shower, low flush wc and wash basin set in work top offering ample of shelving space. Laminate flooring and wall mounted electric towel heater.



Outside:

To the front of the property is an allocated parking space.

To the rear of the property are communal gardens with pleasant area for outdoor seating.



Tenure

Leasehold

Term: 189 years from October 1990 – Approx 157 years remaining

Service Charge Approx: £1366.44 (£113.87 pcm)

Viewings

For further information or to arrange a viewing please contact our office on 01924 249349.

Free valuations

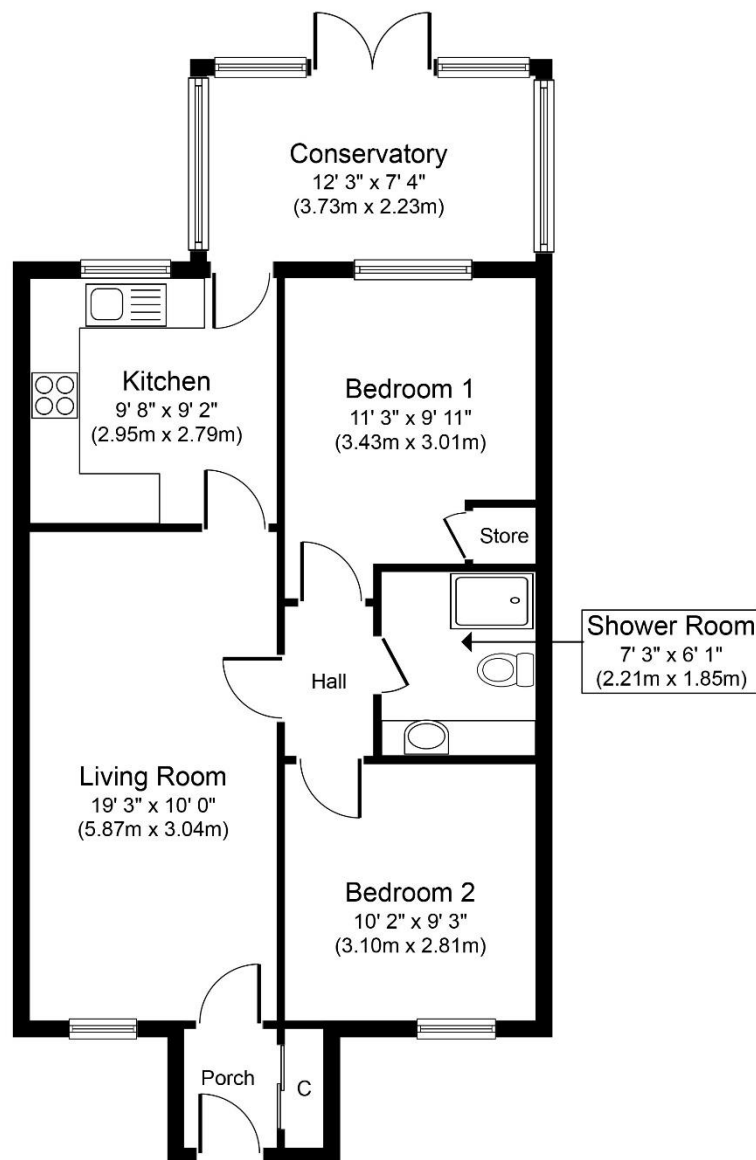
Considering selling or letting your property?

For a free valuation on your property please do not hesitate to contact us Movenowproperties.com 01924 249349 /

info@movenowproperties.com

Floor plans

These floor plans are intended as a rough guide only and are not to be intended as an exact representation and should not be scaled. We cannot confirm the accuracy of the measurements or details of these floor plans.



Approximate Floor Area
714 sq. ft.
(66.4 sq. m.)

Whilst every attempt has been made to ensure the accuracy of the floor plan contained here, measurements of doors, windows, rooms and any other items are approximate and no responsibility is taken for any error, omission, or mis-statement. The measurements should not be relied upon for valuation, transaction and/or funding purposes. This plan is for illustrative purposes only and should be used as such by any prospective purchaser or tenant. The services, systems and appliances shown have not been tested and no guarantee as to their operability or efficiency can be given.

Copyright V360 Ltd 2022 | www.houseviz.com

DISCLAIMER:

The details shown on this website are a general outline for the guidance of intending purchasers, and do not constitute, nor constitute part of, an offer or contract or sales particulars. All descriptions, dimensions, references to condition and other details are given in good faith and are believed to be correct but any intending purchasers should not rely on them as statements or representations of fact but must satisfy themselves by inspection, searches, survey, enquiries or otherwise as to their correctness. We have not been able to test any of the building service installations and recommend that prospective purchasers arrange for a qualified person to check them before entering into any commitment. Further, any reference to, or use of any part of the properties is not a statement that any necessary planning, building regulations or other consent has been obtained. All photographs shown are indicative and cannot be guaranteed to represent the complete interior scheme or items included in the sale. No person in our employment has any authority to make or give any representation or warranty whatsoever in relation to this property.